

Plot 3



Plot 3



Plot 5



Plots 1 & 3 St Michaels Road

A superb opportunity to reserve off plan a detached 2 or 3 bedroom bungalow, situated on an exclusive development of just five bungalows in the centre of Claverdon.

Finished to high level of specification with excellent eco credentials and an opportunity to influence design and fittings to your requirements.

The finished home will have sizable living space having vaulted ceilings to hall and living areas, and would be ideal for any discerning buyer wanting to enjoy spacious living on one level. Good sized gardens, driveway and garage.

The property will be finished to a high level of specification, with excellent Eco Credentials, making this a future proof home.



SPECIFICATION

Kitchen.

1. Professionally designed kitchen with style and doors of purchasers choice.
2. Feature island with breakfast bar.
3. USB and power sockets to the island.
4. Stone work surfaces to kitchen and utility.
5. One and a half bowl under mounted sink with engraved drainer and chrome plated mixer taps to kitchen and utility.
6. Branded appliances to include single oven, combination microwave, integrated full height fridge, full height freezer, integrated dishwasher and extractor hood.
7. Integrated Wine Cooler.
8. Branded induction hob.

Bathroom, Ensuites and WC.

1. Roca/Laufen, or similar, white sanitaryware.
2. Roca/Laufen, or similar, fitted bathroom furniture with concealed cisterns.
3. Tiling to walls and floors in bathrooms and ensuites and WC (half height only to WC). Full height to shower areas only.
4. Hansgrohe or similar chrome plated dual controlled mixer taps with pop-up waste to basins and bath.
5. Shower cubicles to include shower doors, low profile shower trays, full height tiling and chrome plated Hansgrohe or similar variable spray adjustment sliding head showers, with rain head feature to all showers.
6. Tiled niches to all shower cubicles.
7. Chrome plated Electric programmable towel rails to bathroom and ensuites.
8. Mirrors to bathrooms and ensuites
9. Shaver point

Internal Finishes.

1. Oak veneer solid core doors with satin chrome door furniture.
2. Karadeen or similar flooring to kitchen/dining area/hallway and WC
3. Ceramic tiling to bathrooms
4. Contemporary 7 inch deep skirting and matching architrave
5. Slim line Aluminium Bi-folding doors to kitchen.
6. Fitted wardrobes to bedrooms 1 & 2 as an optional extra.
7. Feature Apex window to family area.
8. Vaulted ceiling to dining area, hallway and family area.
9. Pull down timber loft ladder.

Electrical Installation.

1. Chrome sockets and switches.
2. Recessed LED downlighters to hall/kitchen/dining room/family room/WC/bathroom and ensuites.
3. Under unit lighting to kitchen.
4. Cat 6 data cabling to all TV points.

5. Electric vehicle charging point.

Environmental Details.

1. A rated kitchen appliances to reduce water and energy use.
2. Dual flush mechanism to toilets to reduce water consumption.
3. PV Solar panels to supplement the Electricity consumption, with the option of a Tesla (or similar) battery to harness the power as a purchasers extra.
4. 100% LED low energy lighting.
5. Double glazed external windows and doors throughout offering superior thermal and acoustic insulation,
6. Composite front and rear doors, offering superior thermal efficiency and security.
7. A or B rated home, meaning very low energy bills.

Security.

1. Multipoint locking system to external doors and windows compliant with Secured by Design Standards and Part Q of the Building Regs including anti-snap locks and laminated glass to all external doors.
2. Intruder alarm system.
3. Exterior lighting.

External Details.

1. Outside water tap.
2. Outside power point.
3. Landscaped front gardens, patio and turf to rear, with porcelain patio.
4. Tarmac road and driveway
5. Aluminium windows and bi folds
6. Silicone based colour through render to the front elevation, no décor or maintenance required.
7. Porcelain patio to rear

Heating.

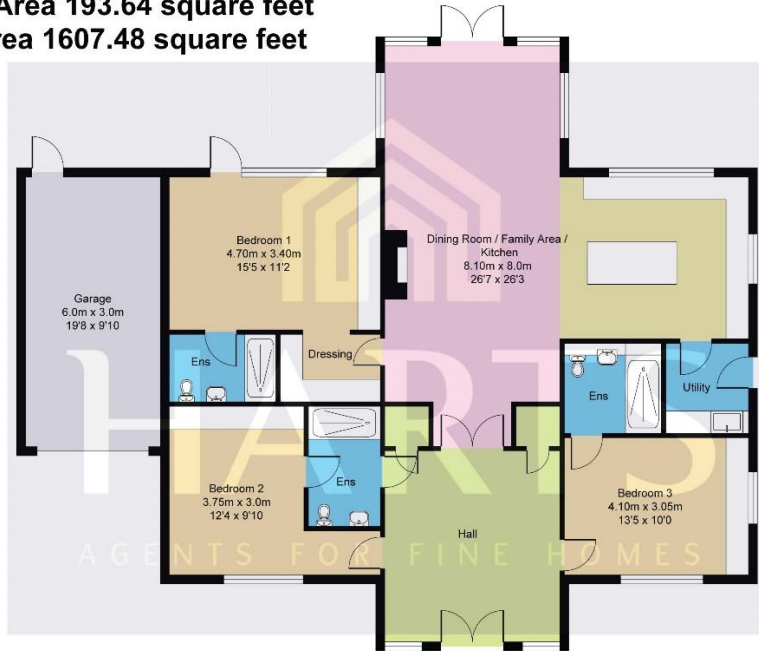
1. Wet Underfloor Heating System to entire ground floor , fully zoned.
2. Mains pressure hot water system.
3. Air Source Heating, resulting in no gas or oil bills.
4. Electric fire in living room
5. Wifi enabled thermostats for the central heating and the underfloor heating.

Additional Details.

1. Electric, sectional garage door.
2. Garage.
3. 10 Year Warranty.
4. High levels of insulation in roof, walls and floors to limit heat loss in the winter and reduce heat gain in summer.

Due to supply issues, the specification may vary from the above but will be substituted with equivalent products.
Agents Note – Images :- CGI's are indicative only and may vary

Plot 1
Main House Area 1413.84 square feet
Garage Area 193.64 square feet
Total Area 1607.48 square feet



THIS FLOORPLAN IS PROVIDED WITHOUT WARRANTY OF ANY KIND. THE PUBLISHER DISCLAIMS ANY WARRANTY INCLUDING, WITHOUT LIMITATION, SATISFACTORY QUALITY OR ACCURACY OF DIMENSIONS.

Plot 3
Main House Area 1413.84 square feet
Garage Area 193.64 square feet
Total Area 1607.48 square feet



THIS FLOORPLAN IS PROVIDED WITHOUT WARRANTY OF ANY KIND. THE PUBLISHER DISCLAIMS ANY WARRANTY INCLUDING, WITHOUT LIMITATION, SATISFACTORY QUALITY OR ACCURACY OF DIMENSIONS.